


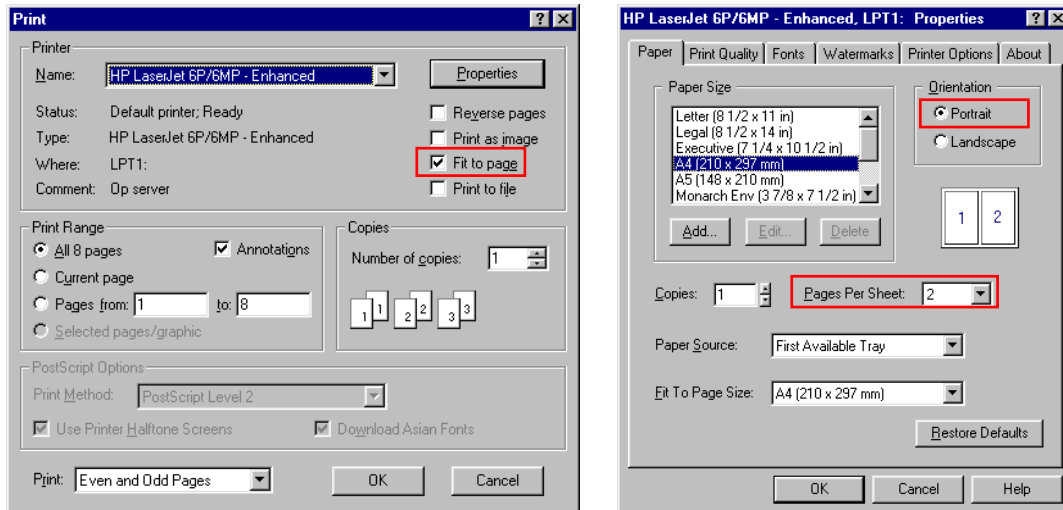
PRINTING PDF DOCUMENTS

For best results printing PDF documents, *use a laser printer*. The PDF files on the CD have been optimised for printing, and you should get good results.

A TIP FOR PRINTING

You may certainly find it useful to print 2 pages to a sheet. The result is very pleasing!

1. Click on the print button  in the toolbar, or select File Print on the menu.
2. Select "Fit to page" if available in your printer dialogue.
3. Click properties and select Pages Per Sheet as 2. Click OK.



TROUBLE SHOOTING

Tips for printing PDF files to low memory printers

If you are printing a PDF file to a non-PostScript printer with a small amount of RAM (for example, 2 MB), the printer may run out of memory. If this occurs, you have three options:

- In Acrobat's Print dialogue, select Properties and change the print resolution to something lower, like 300 dpi.
- Upgrade the memory in the printer.
- If Acrobat fails to print a file correctly, try selecting the "Print As Image" option in Acrobat's Print dialogue. This option, which tells Acrobat to send a 300 dpi raster image to the printer rather than vector art, may enable troublesome files to print. This option is not, however, recommended for general purpose use because it may make many PDF files print slower.

Use the enhanced drivers that come with HP LaserJet printers

For the best results when printing to LaserJets from Acrobat use the Enhanced drivers, not the Standard drivers. You can download the HP LaserJet 5/6 Enhanced driver from HP's website.

PDF pages printed on PCL printers may not be centered

Certain DeskJet and other printers have printer drivers that do not have consistent margins all the way around the page. The left and right values generally are equivalent, but the top and bottom are sometimes quite different. This can result in a PDF file being printed with the contents appearing to shift toward the top of the page. Try printing with the FitToPage option turned on in the Print dialogue to alleviate the effect. This may be useful, however there is no guaranteed fix since the issue is with the printer driver.